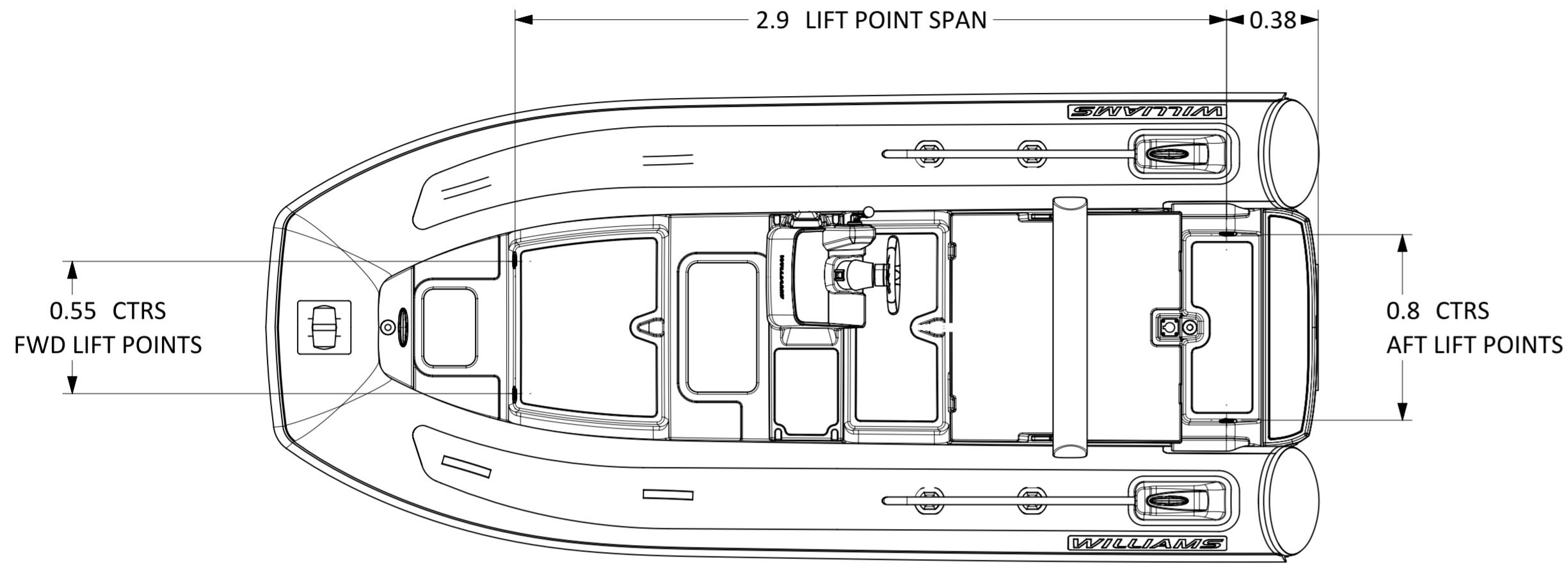


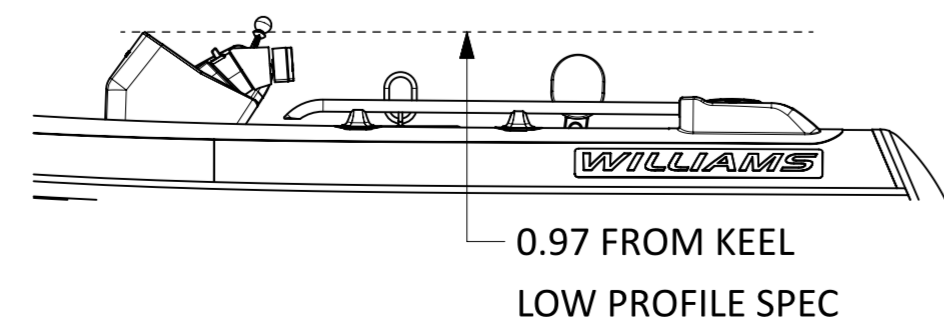
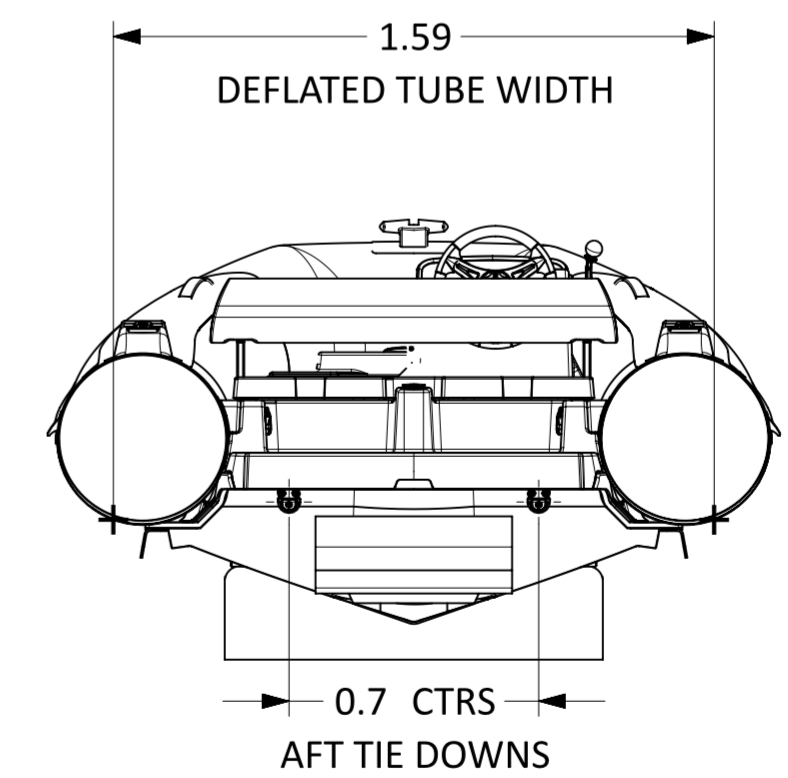
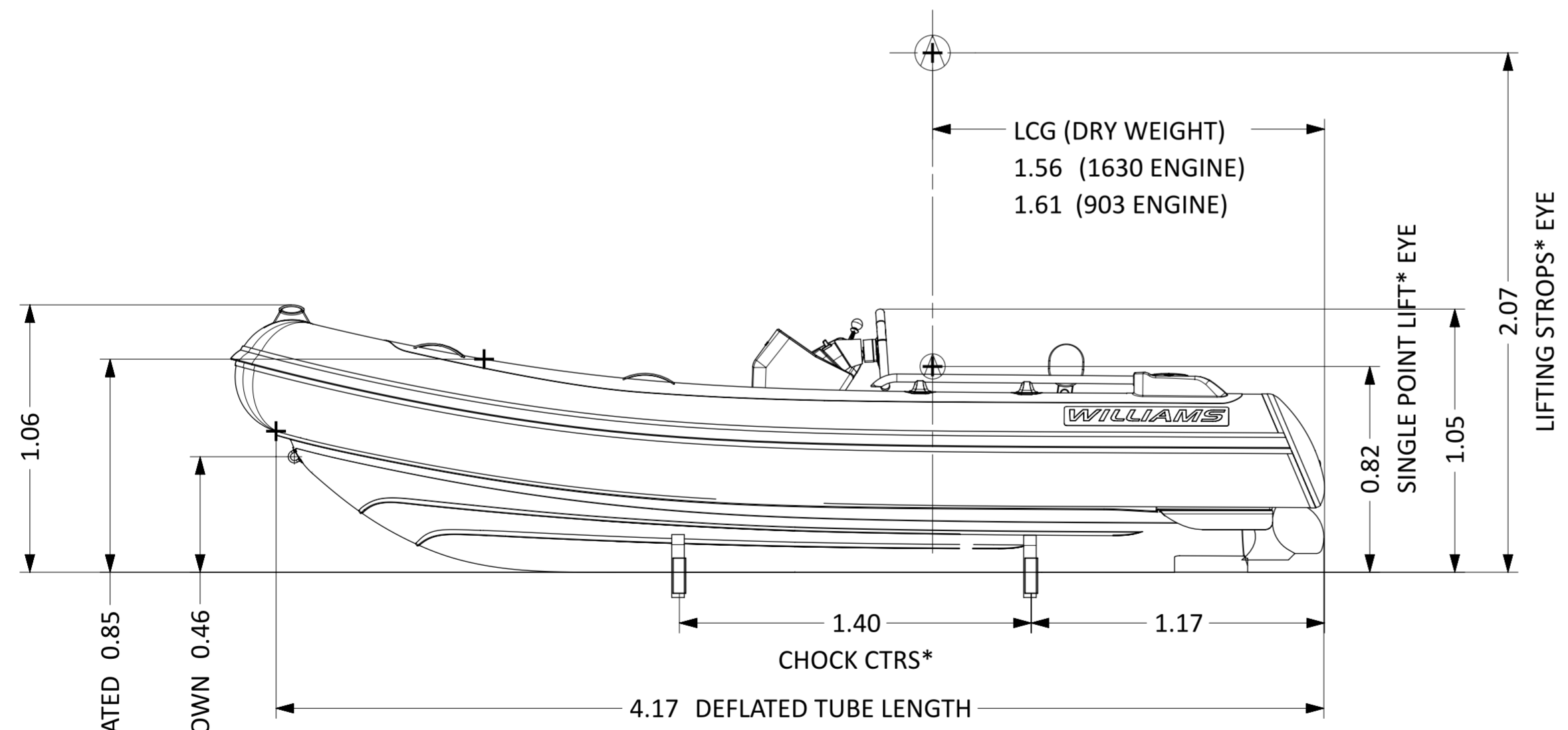
# SPORTJET 435

LENGTH O.A.	4.35m (±1%)
BEAM O.A.	1.94m (±1%)
DRAFT (FULLY LOADED)	0.36m
ENGINE	Rotax ACE 90 ECT/ 130 ECT
POWER	90/ 130hp ≅ 66.19/ 100 kW
DRY WEIGHT	446kg / 517kg
SEATING CAPACITY	7 + 1 child
FUEL	PETROL
FUEL CAPACITY	60L
MAX. SPEED	40/ 50mph ≅ 64/ 80kph
No. TUBE COMPARTMENTS	5
CE DESIGN CATEGORY	C



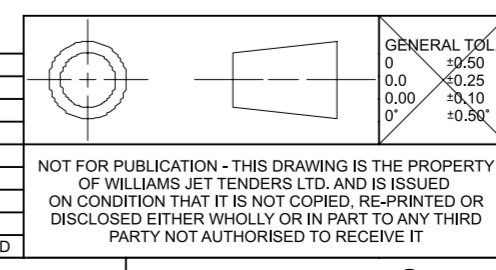
**NOTES:**

1. LENGTH / BEAM TOLERANCE DUE TO VARIATION IN TUBE PRESSURE.
2. AVERAGE DRY WEIGHT STATED; ACTUAL WEIGHT DEPENDENT ON OPTIONS FITTED.
3. LOW PROFILE SPEC:  
-DEFLATE TUBES, (AUTO BOW TUBE INFLATOR OPTION REQUIRED\*).  
-REMOVE STEERING WHEEL, (QUICK RELEASE OPTION REQUIRED\*).
4. STANDARD CHOCKS\*: 99-0405  
CHOCK PROFILES DRAWING: RD2131



\*OPTIONAL ACCESSORY

REV.	DATE	DETAILS	FZ	OBB
1	15/09/23	DOCUMENT PRODUCTION	FZ	OBB
			DRAWN	APPVD



DRAWN	FZ	15/09/23
APPVD	OBB	
PROJECT:		
INSPECTION LEVEL:		
MATERIAL & FINISH		

**WILLIAMS**

TITLE: **SPORTJET 435 (2024MY)**

PART NO.: **WPT-000435SJ-2024MY-DATASHEET-dwg.1**

SCALE: 1:20

SHEET 1 OF 1

NOT FOR PUBLICATION - THIS DRAWING IS THE PROPERTY OF WILLIAMS JET TENDERS LTD. AND IS ISSUED ON CONDITION THAT IT IS NOT COPIED, RE-PRINTED OR DISCLOSED EITHER WHOLLY OR IN PART TO ANY THIRD PARTY NOT AUTHORISED TO RECEIVE IT

REMOVE ALL BURRS & BREAK SHARP EDGES  
GENERAL SURFACE FINISH Ra 1.6UM  
DIMENSIONS IN MM UNLESS STATED  
DO NOT SCALE DRAWING