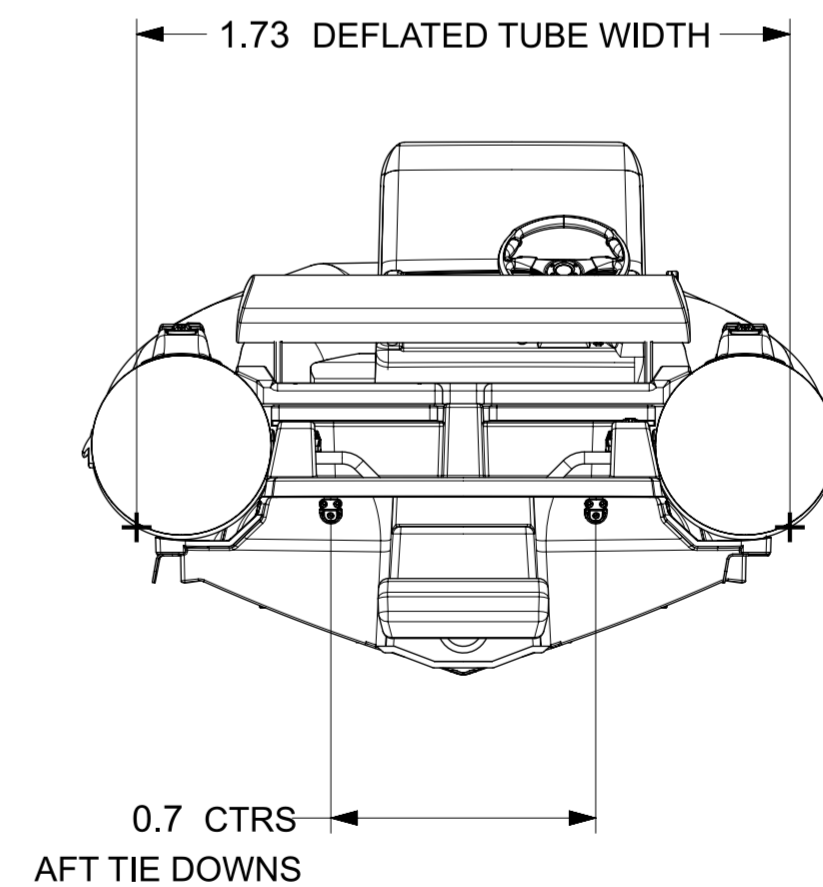
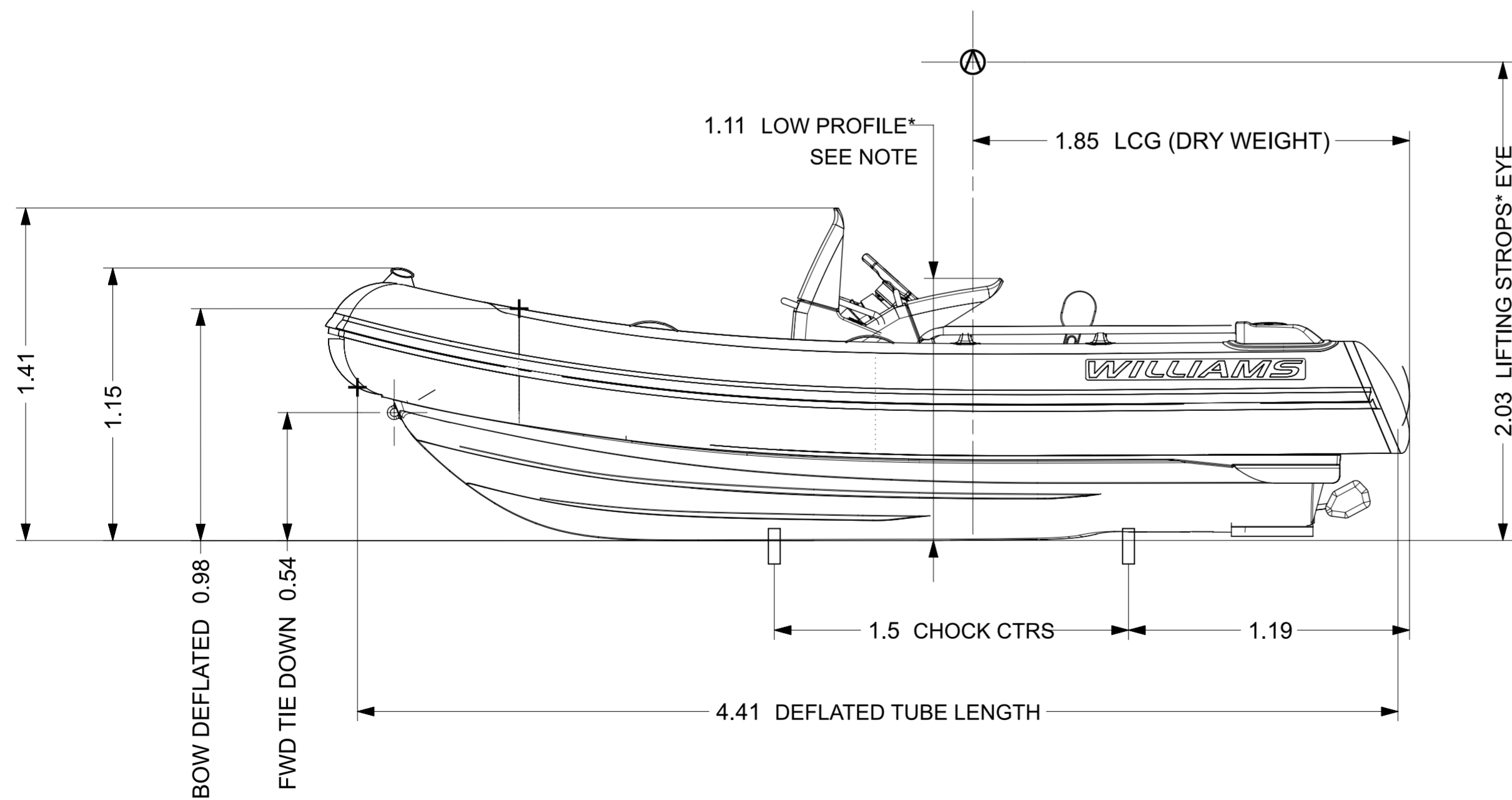
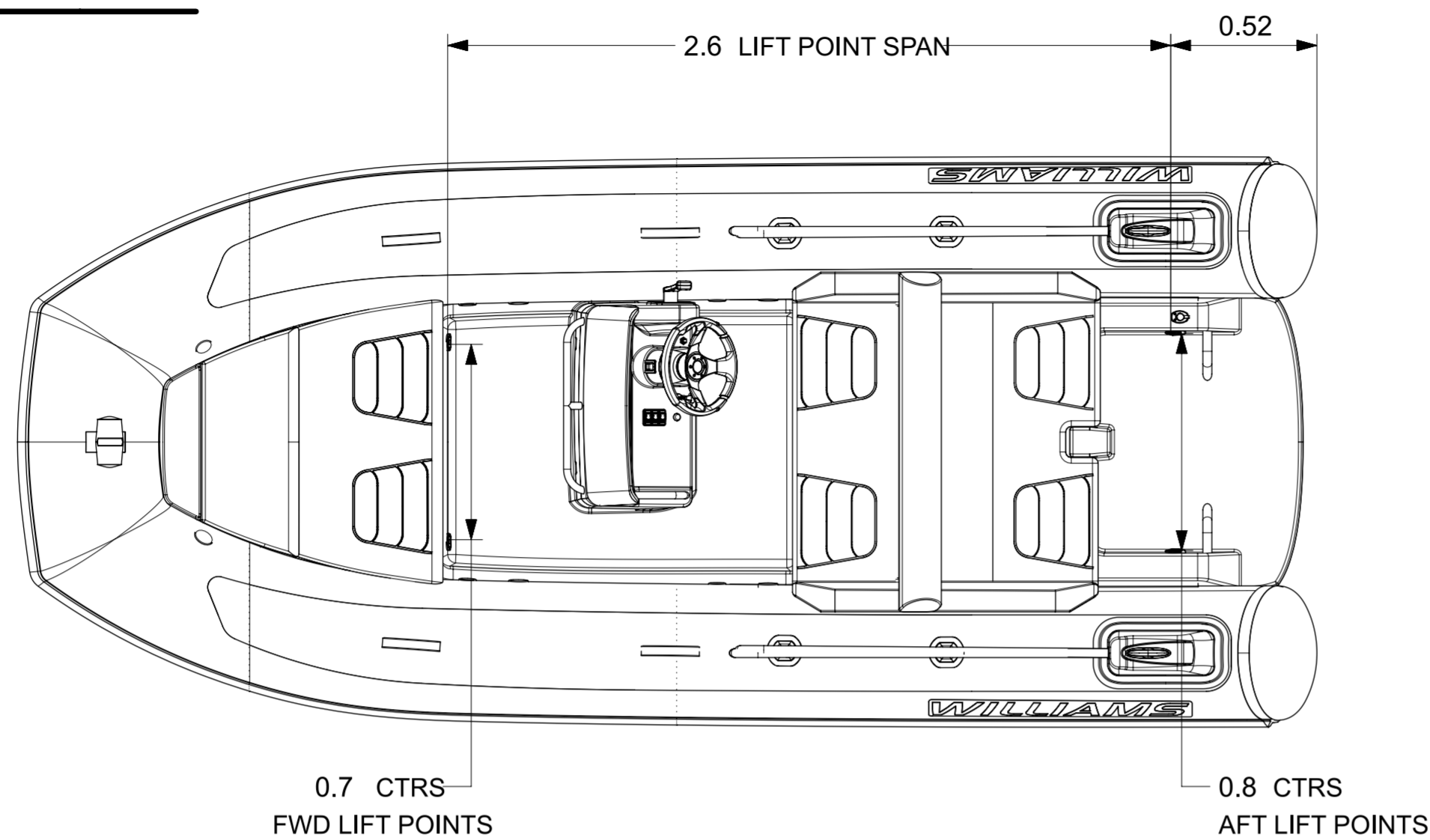


SPORT JET

460



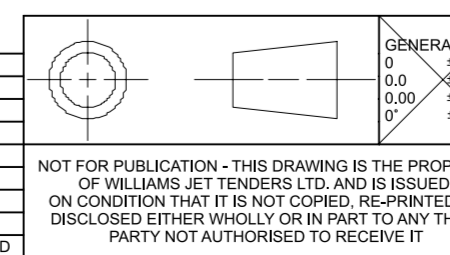
LOA	4.59m ±1%
BEAM OA	2.01m ±1%
DRAFT (FULLY LOADED)	0.42m
ENGINE	Rotax ACE 170 ECT
POWER	170hp ≅ 125.03kW
DRY WEIGHT	550kg
SEATING CAPACITY	6
FUEL	PETROL
FUEL CAPACITY	100L
MAX. SPEED	48mph ≅ 77kph
No. TUBE COMPARTMENTS	5
CE DESIGN CATEGORY	C

NOTES:

1. LENGTH / BEAM TOLERANCE DUE TO VARIATION IN TUBE PRESSURE.
2. AVERAGE DRY WEIGHT STATED; ACTUAL WEIGHT DEPENDENT ON OPTIONS FITTED.
3. LOW PROFILE:
 - DEFLATE TUBES
 - QUICK RELEASE STEERING WHEEL
 - FULLY FOLD DOWN HELM
4. STANDARD CHOCKS*: 99-1460. CHOCK PROFILES DRAWING: RD472.

*OPTIONAL ACCESSORY

REV.	DATE	DETAILS	WE	DBS
1	12/08/2021	PRODUCTION RELEASE	WE	DBS



DRAWN	WE	DATE	12/08/2021
APPVD	DBS	DATE	12/08/2021
PROJECT:	-		
INSPECTION LEVEL:	-		
MATERIAL & FINISH	-		

WILLIAMS

TITLE: **SPORTJET 460 (2022MY)**

PART NO.: **WPT-000460SJ-2022MY-DATASHEET -dwg.1**

SCALE: 1:20

SHEET 1 OF 1

NOT FOR PUBLICATION - THIS DRAWING IS THE PROPERTY OF WILLIAMS JET TENDERS LTD. AND IS ISSUED ON CONDITION THAT IT IS NOT COPIED, RE-PRINTED OR DISCLOSED EITHER WHOLLY OR IN PART TO ANY THIRD PARTY NOT AUTHORISED TO RECEIVE IT

REMOVE ALL BURRS & BREAK SHARP EDGES
GENERAL SURFACE FINISH Ra 1.6UM
DIMENSIONS IN MM UNLESS STATED
DO NOT SCALE DRAWING